



ST. JAMES

SYNODAL CATHOLIC

COMMUNITY MIDTOWN



2026 Stewardship Appeal

Mission

We, the people of the St. James community, in faith, commit ourselves to building the Reign of God for all people, serving especially our neighbors in Midtown, Kansas City.



The 2026 Appeal

Stewardship is more than a single moment. It is a way of life. Throughout the year, we invite parishioners to share their time and talent in service to God and one another.

Each November, St. James places special focus on the sharing of our financial gifts, recognizing that our treasure is an essential part of sustaining and growing our mission.

Our Annual Stewardship Appeal is an invitation to prayerfully commit your financial support for the coming year. You can help fuel the life of our parish.

- Support our dedicated parish staff
- Enrich worship and liturgical celebrations
- Provide religious education and faith formation
- Extend Christ's love through mission and outreach
- Repair and maintain our parish facilities/utilities

Vision

St. James Parish will be a vital Catholic Christian presence at the crossroads of Kansas City, meeting the spiritual needs of our members, and impacting both the midtown neighborhood and the larger community. We will be a growing and diverse community where worship and sacramental life are joyful and vibrant. A place where people are empowered to live the Gospel; and where the needs of the poor and disenfranchised are lovingly and humbly addressed.

ST. JAMES PARISH
3909 HARRISON
KANSAS CITY, MO 64110

LT@STJKC.ORG
816-561-8512
STJKC.ORG

2026 Stewardship Appeal

A Message From Our Synodal Director

At St. James Church in Midtown, we begin our annual stewardship appeal with a searching question: “What difference does it make that we are here at 39th and Troost?”

For more than a century, this corner has been a place where God’s mercy has welcomed all—a bridge church, a sacred space where divisions are healed and community is born. We carry forward the vision of a synodal church, where every baptized person has a voice, where the Spirit leads through the hands and hearts of lay leaders and volunteers, and where the Gospel is lived in daily acts of service and love.

As we enter our 120th year, we remember the struggles and triumphs of those who came before us. Their faith built the foundation we now stand upon. Their sacrifices remind us that the challenges of today are not obstacles, but invitations to deeper trust in the God who has never failed us.

Now it is our turn. We are called to sustain this mission with our presence, our generosity, and our witness—to nurture vibrant liturgies, to care for our buildings and grounds, to extend mercy to the neighbors who knock at our doors.

We are surrounded by a cloud of witnesses, the saints and servants of St. James who poured out their lives for the Kingdom of God at 39th and Troost. Their legacy is alive in us and with confidence, we proclaim: God is with us still.

In Christ,

Pat Marrin

Synodal Parish Director



What is Stewardship?

Stewardship begins with a profound truth: everything we are and everything we have is a gift from our loving God. Our lives, our talents, and our resources—all flow from God’s generosity.

The essential question is, “What will we do with these gifts?” The life of Jesus shows us the answer. We are called to build the Kingdom of God here on earth centered around love and justice.

The U.S. Catholic Bishops describe stewardship: “As Christian stewards, we receive God’s gifts gratefully, cultivate them responsibly, share them lovingly in justice with others, and return them with increase to the Lord.”

Stewardship, then, is not an optional practice but the very heart of what it means to live as a Catholic. It is the daily call to offer our time, talent, and treasure in service of God’s mission; to transform gratitude into action, and gifts into blessings for others.

Before You Decide

For many, this is the most significant charitable gift of the year. As you prayerfully discern your commitment:

Give Thanks: Rejoice in God's blessings, entrusted to us to build God's Kingdom.

Pray for Guidance: What is the sacrifice God asks of you?

Remember: St. James depends on each of us today and for generations to come.

Know: Every gift makes a vital difference.

Adjust: Your commitment can be changed anytime by calling the office.

Discuss: Speak with your family about faithful generosity.

Honor the past: Continue the legacy of those who gave before us.



The Past

With your support, St. James has flourished this past year. Here is a glimpse of what we have accomplished together:

- Our parish embraced an important change: moving from a Parish Administrator model to a Synodal Model, where all members are invited to share in the decision-making process on major parish matters.
- As part of this transition, the Leadership Team recommended hiring Pat Marrin as our Parish Synodal Director—a decision that was affirmed by the parish synod.
- Worship & Sacraments: In 2025, 110–150 parishioners gathered in prayer on Sundays, we celebrated 7 baptisms, 17 first communions and first reconciliations, 2 weddings, and honored 5 beloved members who entered eternal life.
- Community Life: Our May Ministry Fair invited members to share their gifts, while monthly Hospitality Sundays kept us connected in fellowship.
- We said farewell to a dear friend and longtime parish leader, Ross Beaudoin. We also expressed our gratitude to Ben Babaran, our Parish Administrator for his many years when he retired at the end of 2024.

ST. JAMES IS A VIBRANT, FAITH-FILLED COMMUNITY ROOTED IN WORSHIP, UNITED IN SERVICE, AND JOYFUL IN FELLOWSHIP!



2026 Stewardship Appeal

Service & Outreach

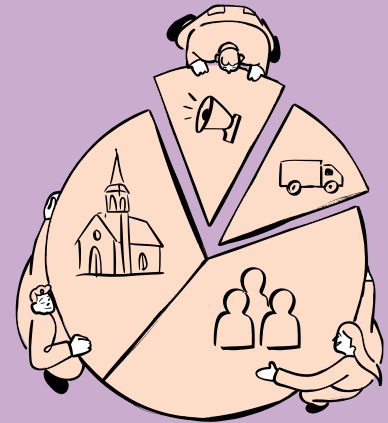
- In our parish, ministry is more than a service. It is a story of neighbors caring for neighbors.
- The Community Garden grows fresh vegetables that make their way to the tables of families who might otherwise go without. This fall, we delivered a whopping 250 pounds of fresh produce to the Bishop Sullivan Food Pantry! St. James was able to share approximately 500 pounds of fresh produce went directly to our neighbors & community.
- Through the Social Justice Committee, we raise our voices for the poor and for those facing the death penalty. We reminded our city that every person is worthy of dignity. In 2025, our immigration ministry has already supported 11 families from Mexico, Cameroon, Cuba, Nigeria, and Burundi. Together, we have provided them with:
 - One-on-one support and accompaniment
 - Access to immigration lawyers
 - Payment of citizenship and green card fees
 - Coverage of legal expenses
 - Assistance with airfare from abroad
- Over the past year, Between the Cracks Ministry has quietly stepped in 33 times to keep the lights on, fill prescriptions, or cover rent for families and individuals.
- At the corner bus stop, where daily life can feel forgotten, our Bus Stop Ministry has handed out over 2,000 snacks & drinks, 1,025 hats & scarves, and 200 sack lunches on weekends when Bishop Sullivan Center was closed. These simple gifts say, "You are seen. You are cared for."
- Faith in Action: Our Liturgy Team enriches worship. The Parish Growth Committee fosters a welcoming spirit. Also, we continue traditions like the Good Friday Stations of the Cross along Troost Avenue.



Your stewardship makes all this possible

Together, we are building the Kingdom of God at the corner of 39th and Troost. Please join us in committing your treasure for 2026 so that St. James can continue to grow as a place of worship, welcome, and witness.

Income and Expense Comparison ST. JAMES CATHOLIC CHURCH KANSAS CITY July 1-September 30, 2025		
	Jul 1 - Sep 30 2025	Jul 1 - Sep 30 2024 (PY)
Income		
CONTRIBUTION INCOME		
CONTRIBUTION INCOME - TITHING	\$54,820.50	\$43,415.00
DEVELOPMENT/FUND RAISING	\$2,068.00	\$15,041.76
OPERATIONAL	\$200.33	\$5,072.49
FAMILY LIFE MINISTRY INCOME	\$600.00	
Other - Between the Cracks	\$1,789.99	
DIOCESAN/PARISH ALLOCATIONS	6,000.00	
Miscellaneous Income	\$2,634.00	\$22,721.00
EXTRAORDINARY INCOME – Large Gifts, Bequests Etc.	\$42,500.00	\$1,000.00
RELIGIOUS EDUCATION INCOME		\$1,000.00
Total for Income	\$110,612.82	\$88,250.25
Expenses		
PERSONNEL Salaries and Benefits	\$21,998.18	\$29,292.06
FACILITIES Utilities, Security and Repairs, Etc	\$12,284.11	\$9,989.30
GENERAL/OPERATIONAL Office Supplies and Insurance, Etc	\$27,617.67	\$33,889.43
PRAYER & WORSHIP	\$1,448.10	\$602.20
RELIGIOUS EDUCATION	\$782.91	\$475.00
PASTORAL MINISTRY BTC, Bus Stop, Garden, Etc	\$2,067.48	\$11,040.88
Unapplied Cash Bill Payment Expense	1,300.00	
Total for Expenses	\$67,498.45	\$85,288.87
Net Income	\$43,114.37	\$2,961.38



When faith takes root in our hearts, it naturally bears fruit in how we live and how we give. Stewardship is not simply about meeting a budget, it is about transforming gratitude into action. Every gift offered becomes a seed of hope, creating a synodal community, helping those in need, and nurturing the next generation in faith. By sharing our financial blessings, we join God's work of renewal in the world, turning belief into tangible love. In giving, we do not lose, we multiply grace.

GENEROSITY:

- Strengthens our vibrant parish community,
- Transforms the lives of those who call St. James their spiritual home,
- Extends compassion to neighbors in need.

We invite every household to embrace the biblical challenge of tithing 10% of gross income:

- 5% to sustain the mission and ministries of St. James Parish
- 1% to the Diocesan Annual Appeal
- 4% to other Kingdom-building efforts, serving those in need locally and globally

If you already give 5% or more to St. James, thank you for your faithful generosity! If you are able to increase your commitment this year, we are deeply grateful.

Tithing, Proportionate Giving, & Your Commitment

To help guide your discernment, the chart below shows how just a .5% increase in giving can make a meaningful difference. By gradually growing your commitment, we can reach the goal of every household supporting St. James with at least 5% of income, strengthening our parish and extending Christ's love far beyond our walls.

Tithing Commitment Guide Chart

Total income	0.50%	1%	1.50%	2%	2.50%	3%	3.50%	4%	4.50%	5%
\$150,000	\$750	\$1,500	\$2,250	\$3,000	\$3,750	\$4,500	\$5,250	\$6,000	\$6,750	\$7,500
\$125,000	\$625	\$1,250	\$1,875	\$2,500	\$3,125	\$3,750	\$4,375	\$5,000	\$5,625	\$6,250
\$100,000	\$500	\$1,000	\$1,500	\$2,000	\$2,500	\$3,000	\$3,500	\$4,000	\$4,500	\$5,000
\$75,000	\$375	\$750	\$1,125	\$1,500	\$1,875	\$2,250	\$2,625	\$3,000	\$3,375	\$3,750
\$50,000	\$250	\$500	\$750	\$1,000	\$1,250	\$1,500	\$1,750	\$2,000	\$2,250	\$2,500
\$25,000	\$125	\$250	\$375	\$500	\$625	\$750	\$875	\$1,000	\$1,125	\$1,250
\$15,000	\$75	\$150	\$225	\$300	\$375	\$450	\$525	\$600	\$675	\$750

Every Gift Matters

At St. James, we are striving for 100% participation because when every household joins in, no matter the amount, our parish grows stronger.

If you are new to giving to St. James, consider starting small: \$5 a week, \$10, or more. Even \$5 a week adds up to \$260 a year, enough to make a real impact in the life of our parish. Every gift, large and small, is a powerful expression of faith and gratitude.

Now Is the Time

Commitment Sunday, November 23, is our moment to come together as one parish family. By returning your commitment card at Mass or by mail you are saying YES to the mission of St. James' future.

Your response is more than a card. It is a visible sign of faith, gratitude, and shared responsibility. Let us take this step forward TOGETHER.



Why Turn in a Commitment Card?

Turning in a card is vital—it allows parish leadership to plan and budget wisely. Not sure of your gift? Start small. You can always adjust your commitment later by calling the parish office.

Can I Use My Retirement RMDs?

Yes. You can give directly from your Required Minimum Distribution (RMD) account to St. James. Doing so may reduce your taxable income. Check with your financial planner or accountant before making the contribution. You can also call the parish office for assistance.

Can I Give Non-Cash Gifts?

Yes. St. James accepts many types of gifts—such as property, vehicles, jewelry, antiques, or crops. In most cases, it's best to convert these items to cash before donating.